

**passpartout**

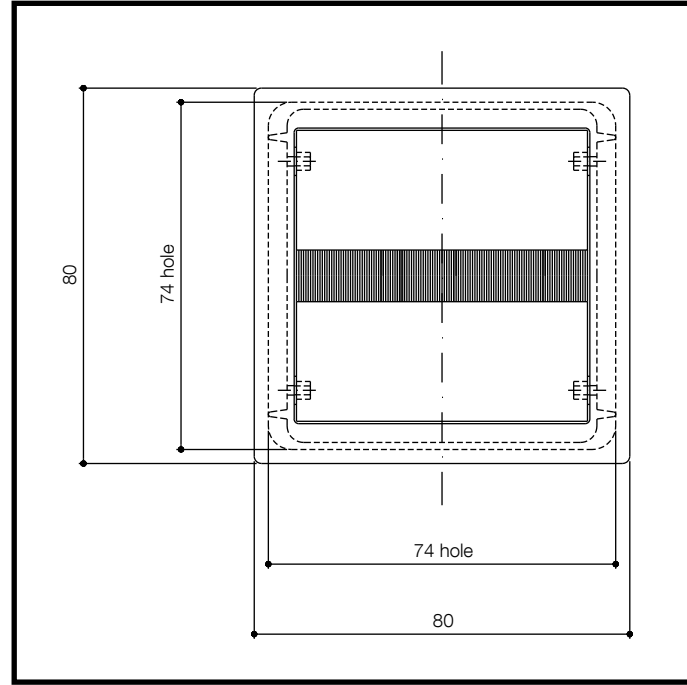
**PASSPARTOUT**



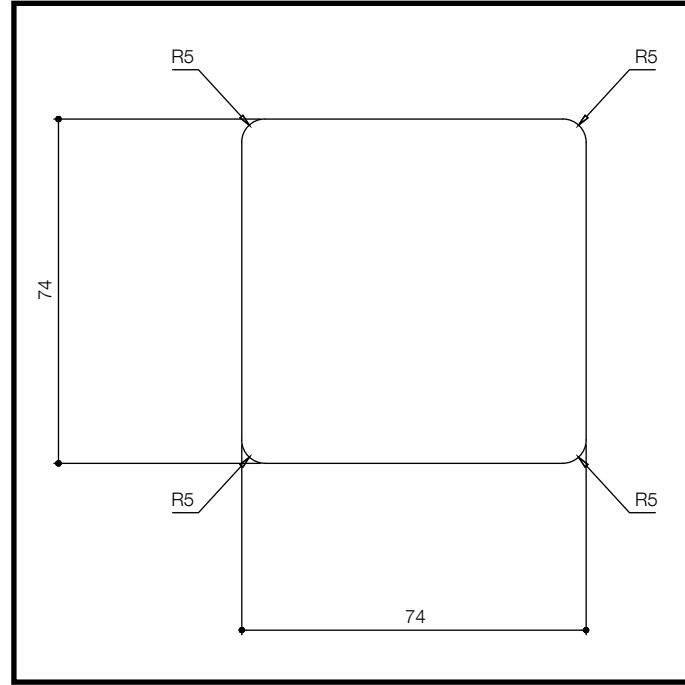
**Ghila, 31**  
Film maker, Pasadena



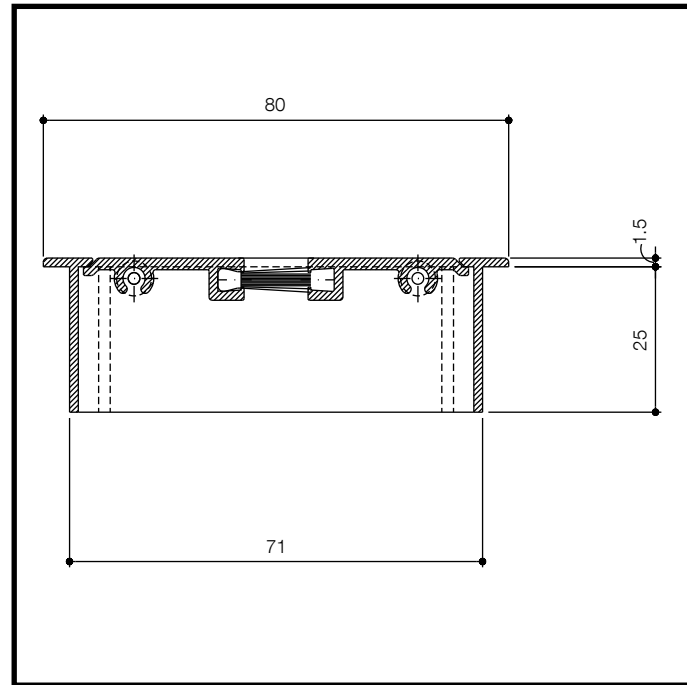
design **Giuseppe Bavuso**



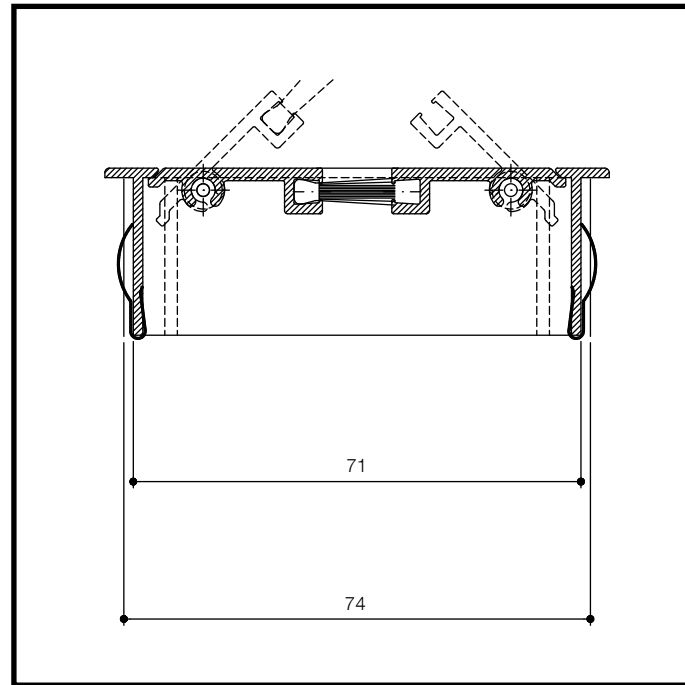
vista frontale **frontal view**



dima foro **hole template**



sezione **section**



sezione incassato aperto **embedded section open**

**Finiture – Finishings**

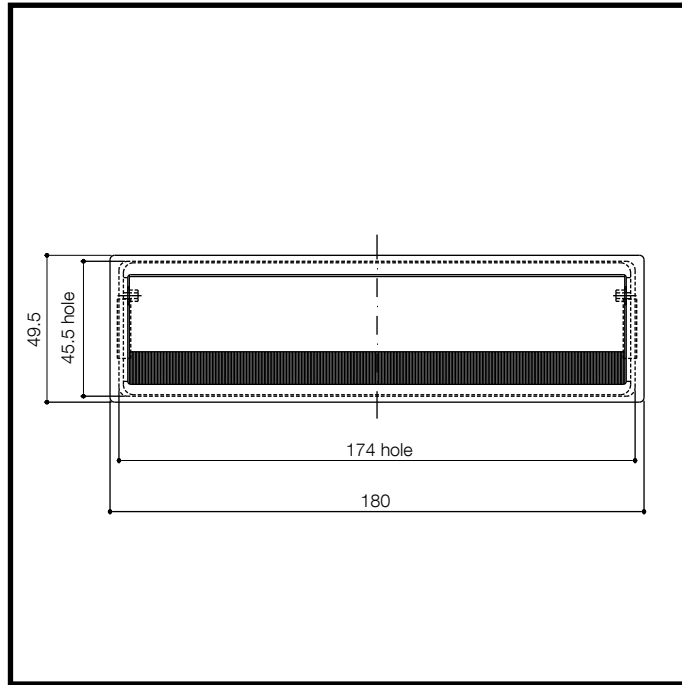
- **E 215** alluminio metallizzato opaco con fondo / **mat metallized aluminium with primer**
- **E 228** nero opaco con fondo / **mat black with primer**
- **E 229** bianco opaco con fondo / **mat white with primer**  
altre finiture su richiesta / **other finishings on demand**



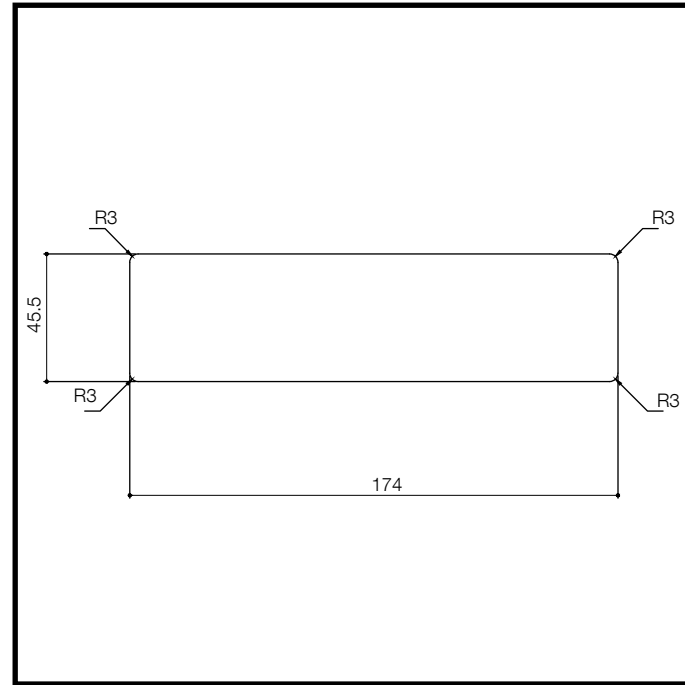
**Vic, 21**  
Chef, Oxford

design **Giuseppe Bavuso**

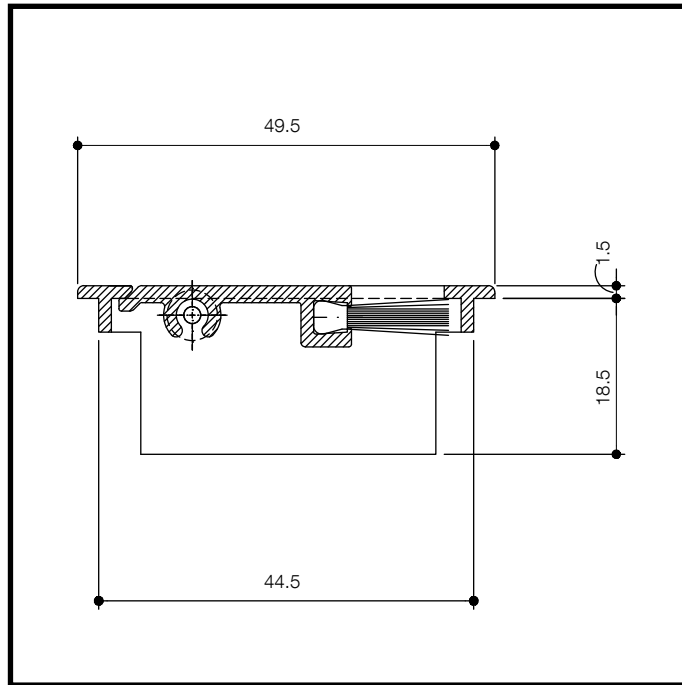




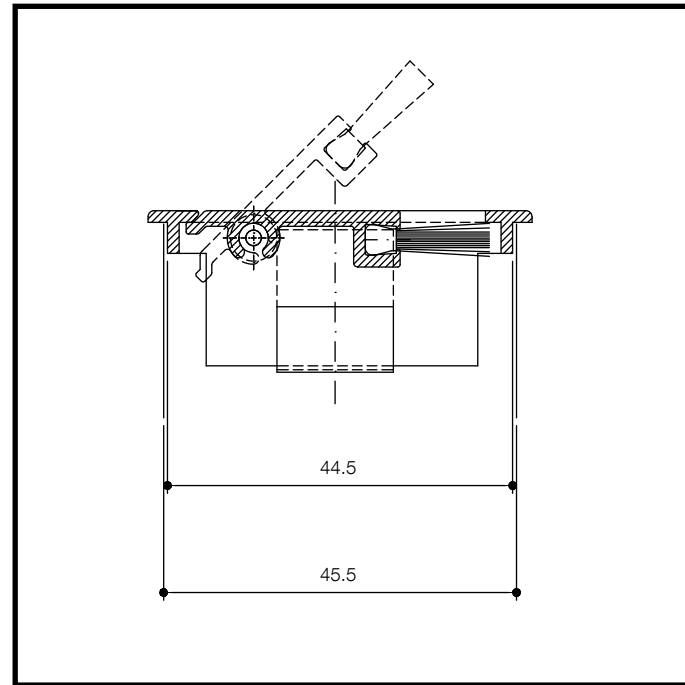
vista frontale **frontal view**



dima foro **hole template**



sezione **section**



sezione incassato aperto **embedded section open**

**Finiture – Finishings**

- **E 215** alluminio metallizzato opaco con fondo / **mat metallized aluminium with primer**
- **E 228** nero opaco con fondo / **mat black with primer**
- **E 229** bianco opaco con fondo / **mat white with primer**  
altre finiture su richiesta / **other finishings on demand**

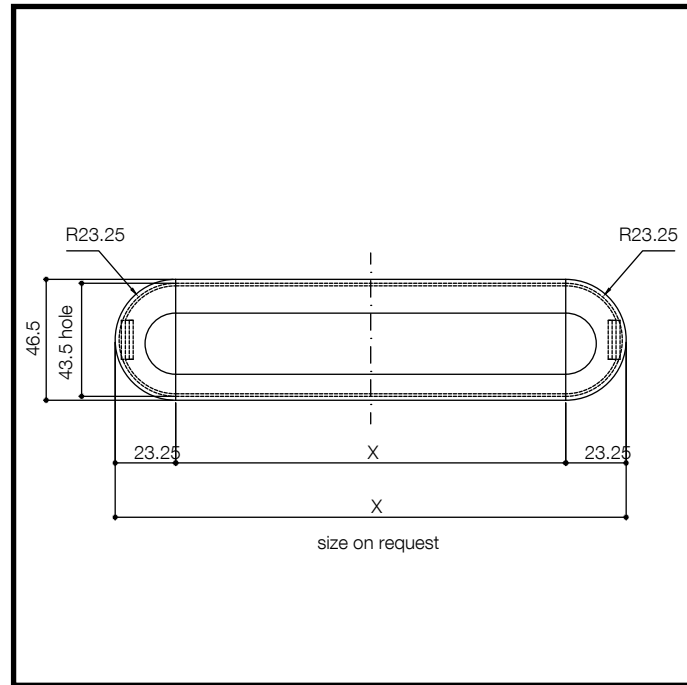




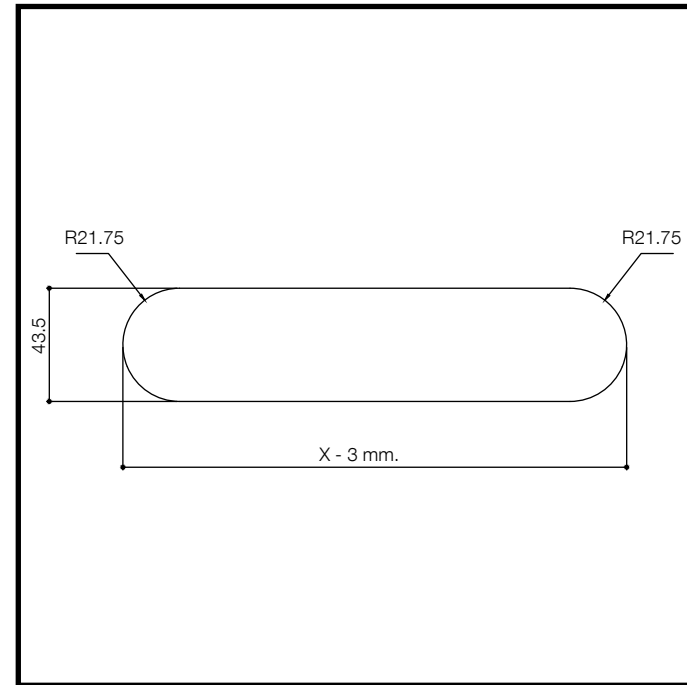
Alice, 32  
Hairstylist, Prague

design Giuseppe Bavuso

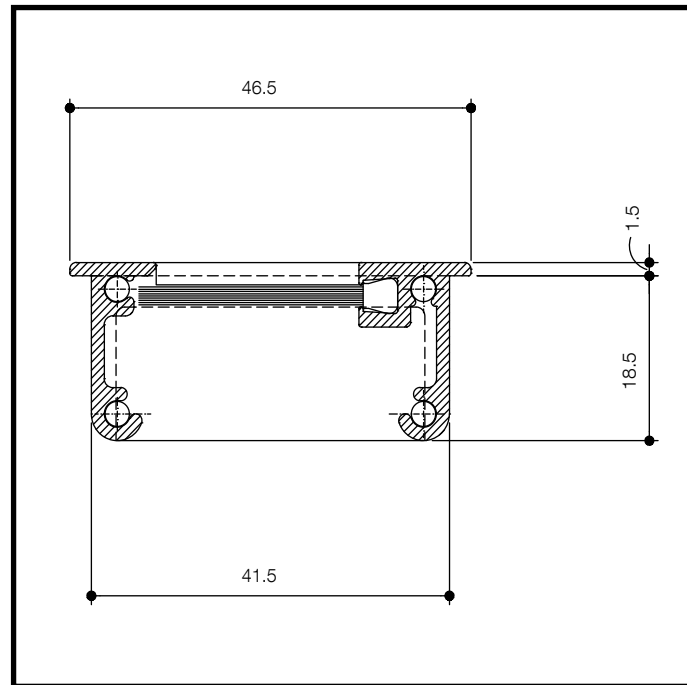




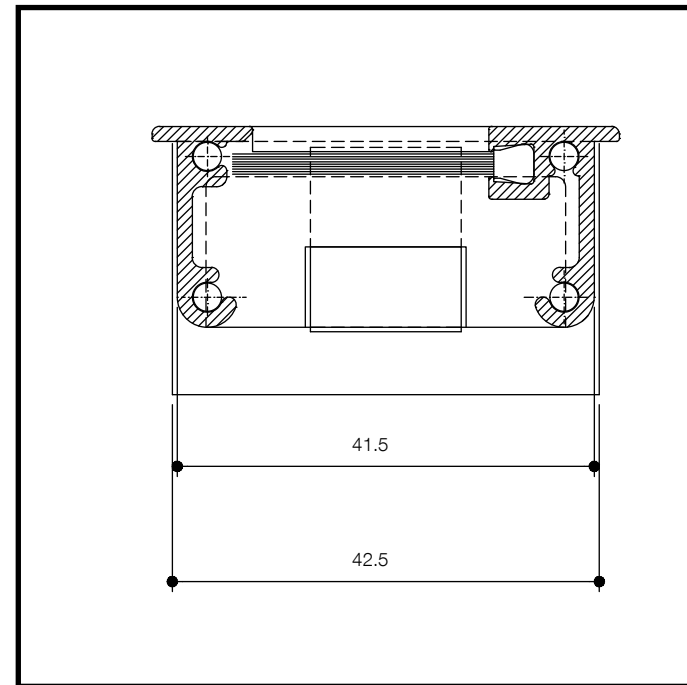
vista frontale **frontal view**



dima foro **hole template**



sezione **section**



sezione incassato aperto **embedded section open**

**Finiture – Finishings**

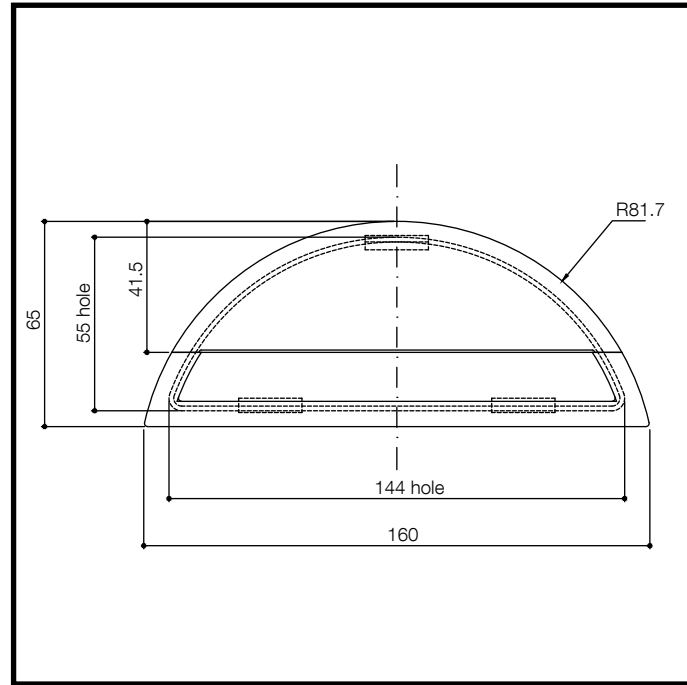
- **E 215** alluminio metallizzato opaco con fondo / **mat metallized aluminium with primer**
- **E 228** nero opaco con fondo / **mat black with primer**
- **E 229** bianco opaco con fondo / **mat white with primer**  
altre finiture su richiesta / **other finishings on demand**

**Elena, 25**  
Sales administrator, Milan

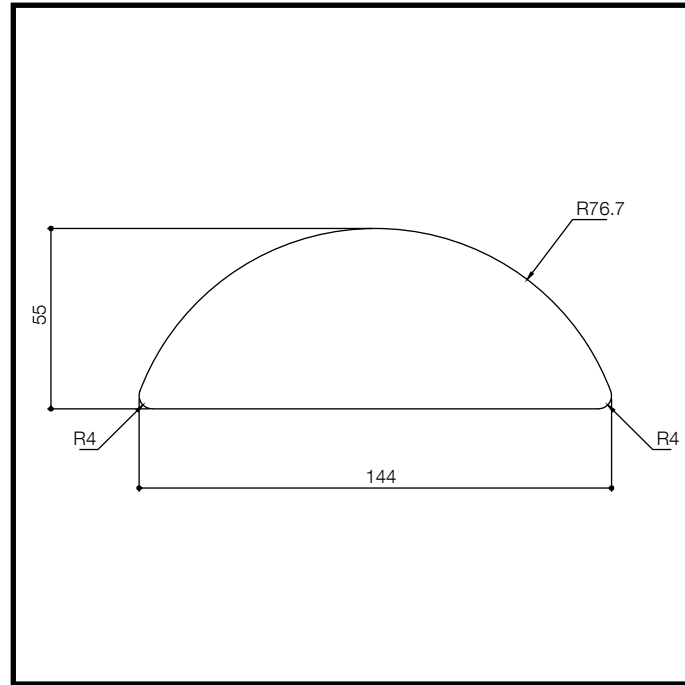


design **Giuseppe Bavuso**

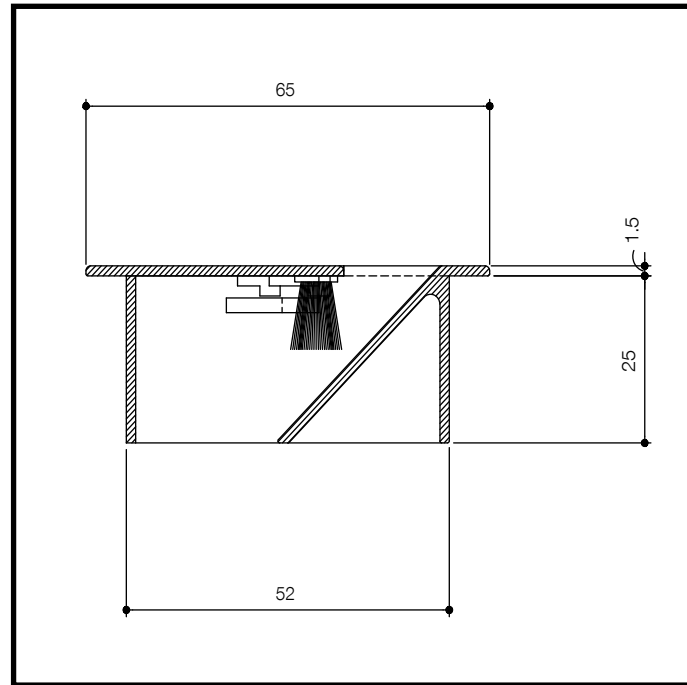




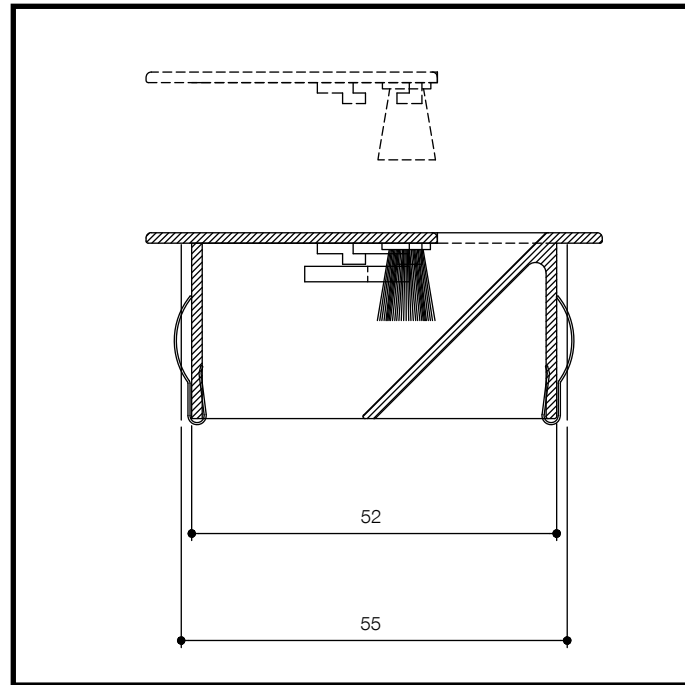
vista frontale **frontal view**



dima foro **hole template**



sezione **section**



sezione incassato aperto **embedded section open**

**Finiture – Finishings**

- **E 215** alluminio metallizzato opaco con fondo / **mat metallized aluminium with primer**
- **G 104** cromato lucido / **bright chromium plated**  
altre finiture su richiesta / **other finishings on demand**

**Roberto, 54**  
Graphic designer, New Dehli



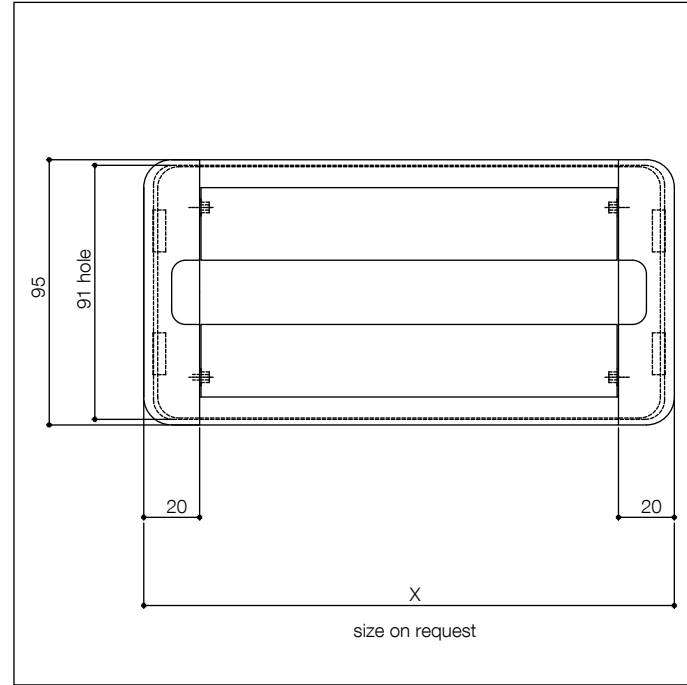
design **Giuseppe Bavuso**



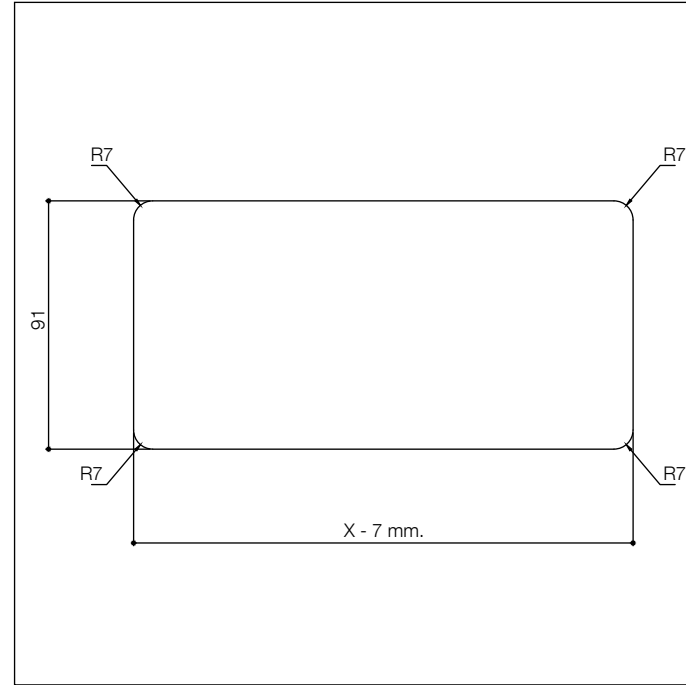
PC 2007 I PC 2008 I PC 2052 I

PC 2007 I

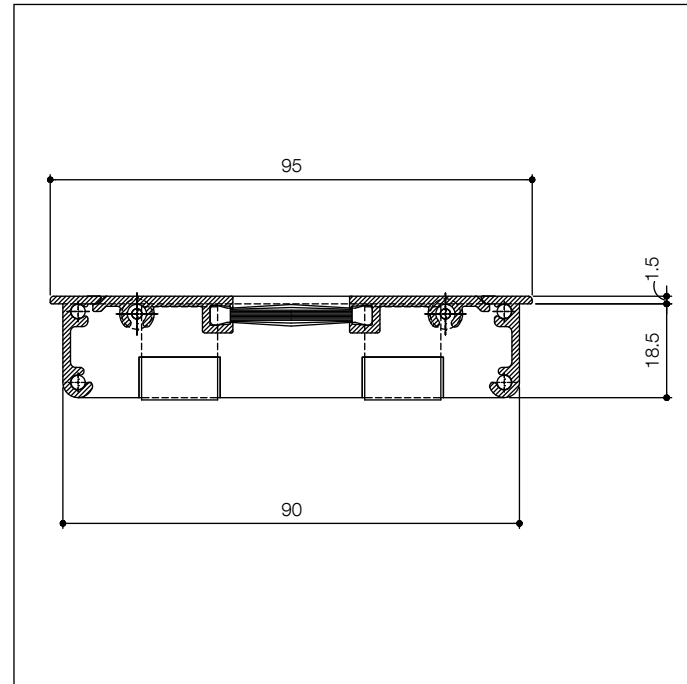
Technical drawings



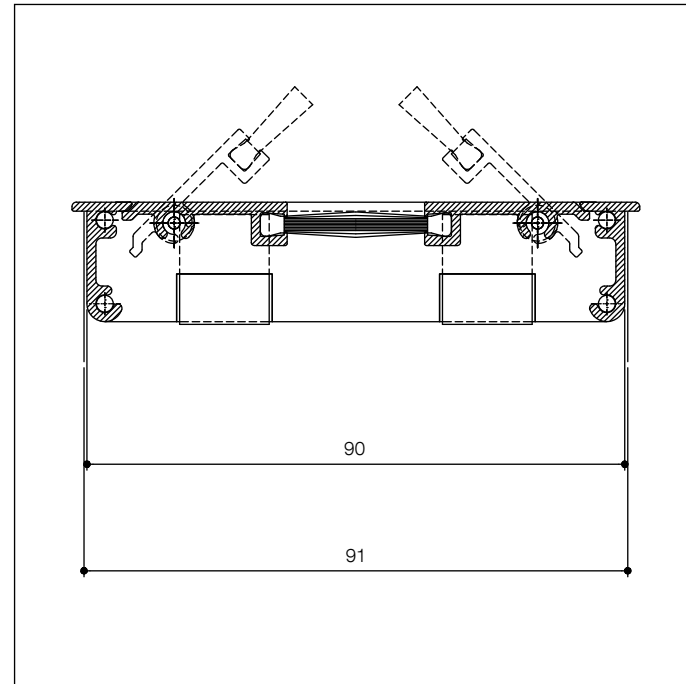
vista frontale **frontal view**



dima foro **hole template**



sezione **section**



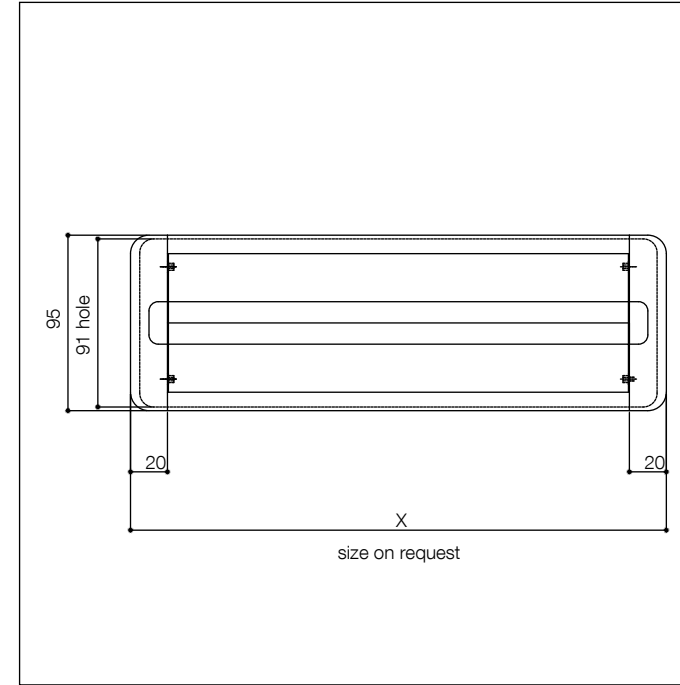
sezione incassato aperto **embedded section open**

Finiture – **Finishings**

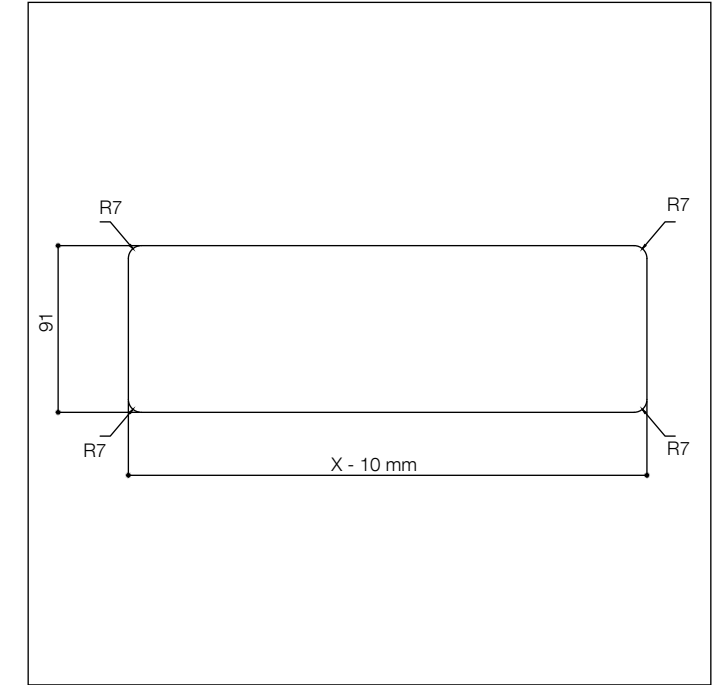
- **E 215** alluminio metallizzato opaco con fondo / **mat metallized aluminium with primer**
- **E 228** nero opaco con fondo / **mat black with primer**
- **E 229** bianco opaco con fondo / **mat white with primer**  
altre finiture su richiesta / **other finishings on demand**

PC 2008 I

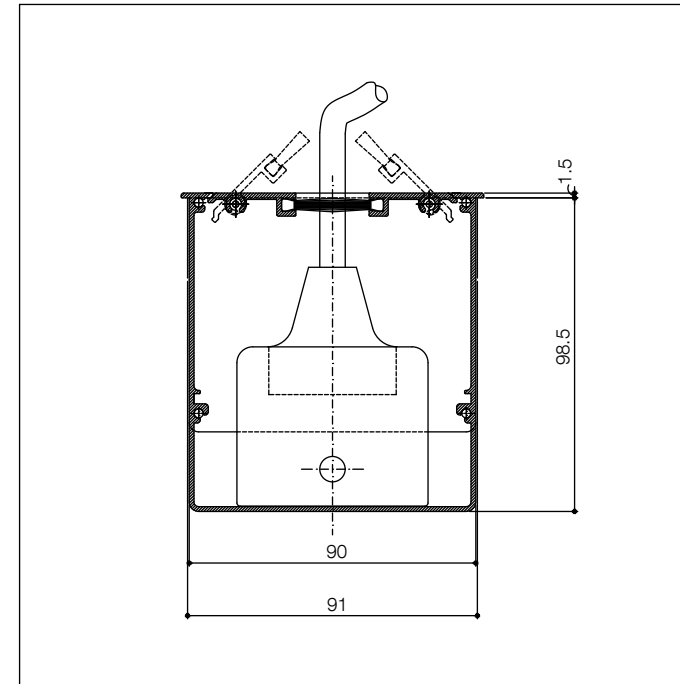
Technical drawings



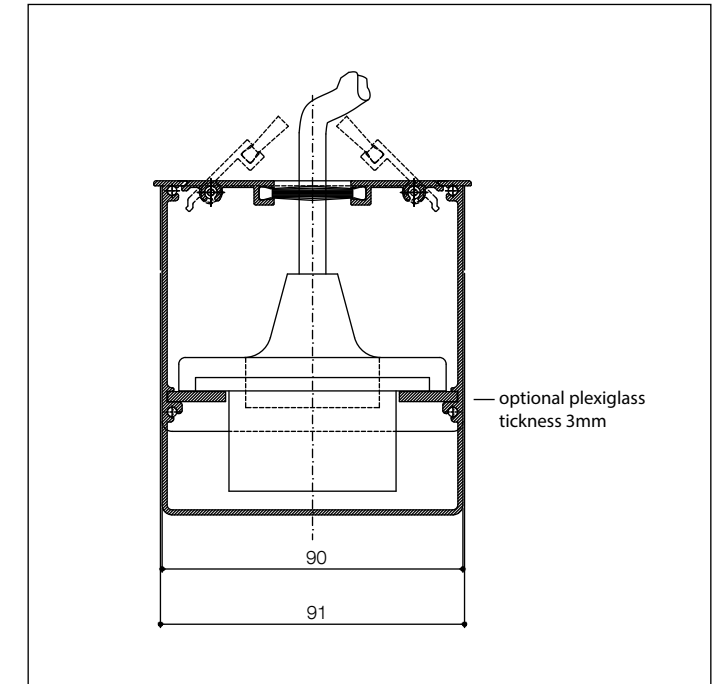
vista frontale **frontal view**



dima foro **hole template**



sezione **section**



sezione incassato aperto **embedded section open**

Finiture – **Finishings**

- **E 215** alluminio metallizzato opaco con fondo / **mat metallized aluminium with primer**
- **E 228** nero opaco con fondo / **mat black with primer**
- **E 229** bianco opaco con fondo / **mat white with primer**  
altre finiture su richiesta / **other finishings on demand**

Michele, 36  
Brooker, London

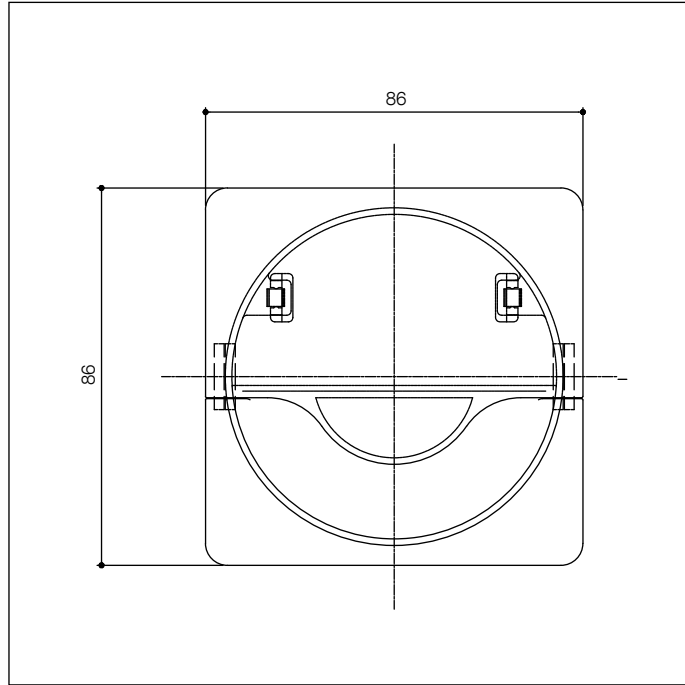
FOR



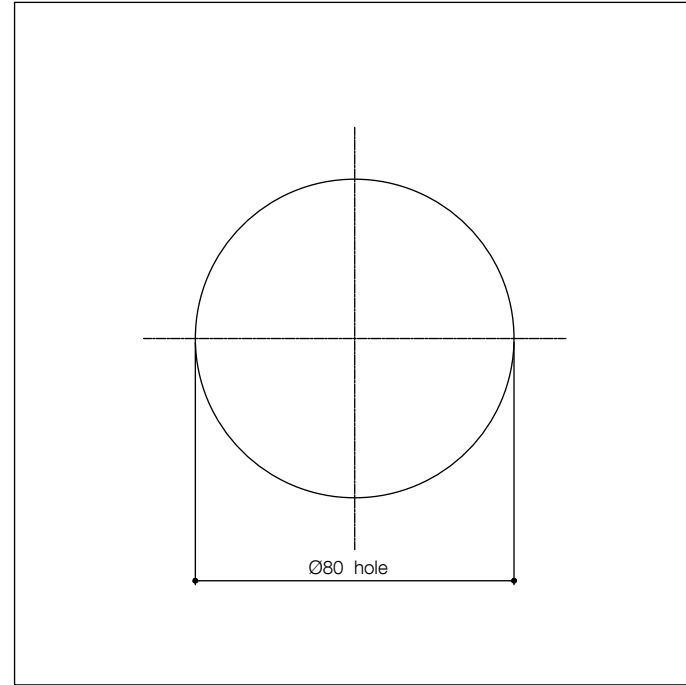
Pontogram



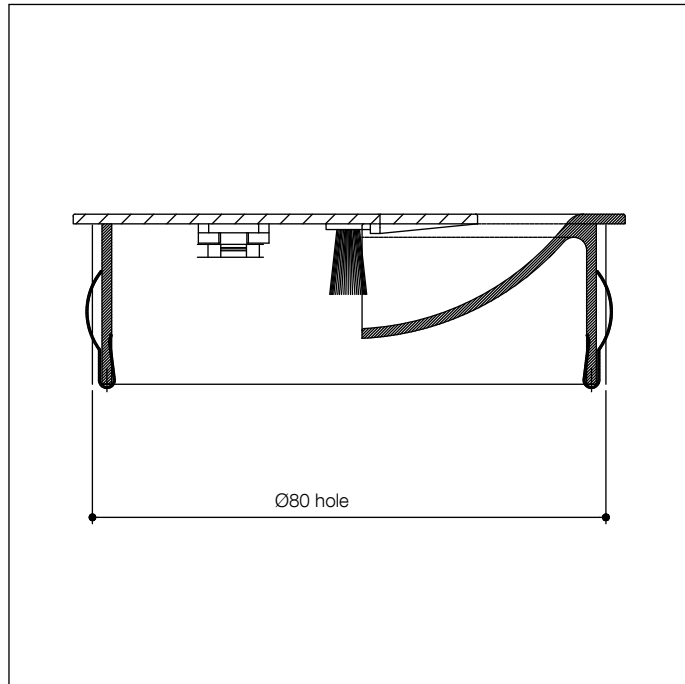
design Giuseppe Bavuso



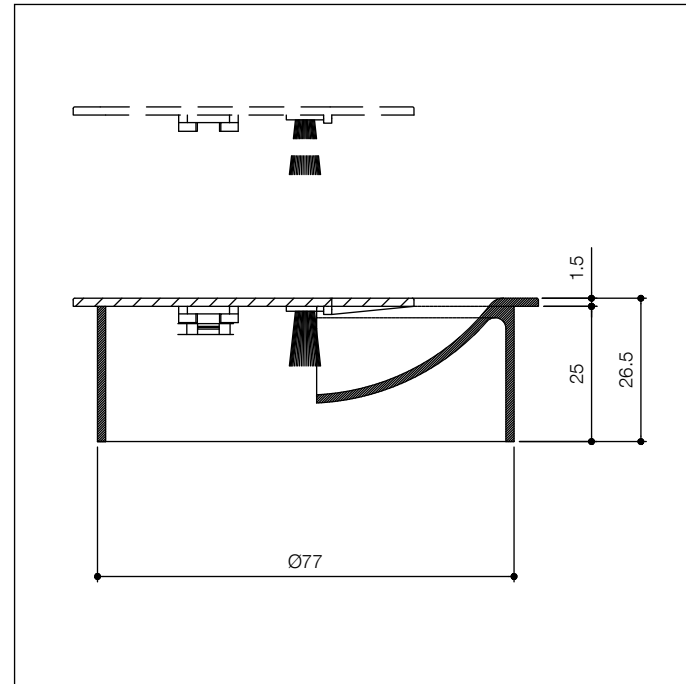
vista frontale **frontal view**



dima foro **hole template**



sezione **section**



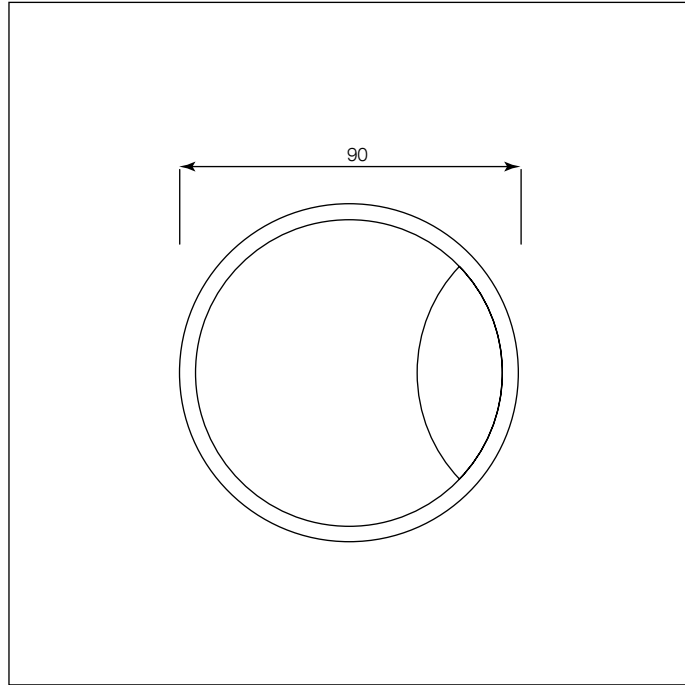
sezione incassato aperto **embedded section open**

**Finiture – Finishings**

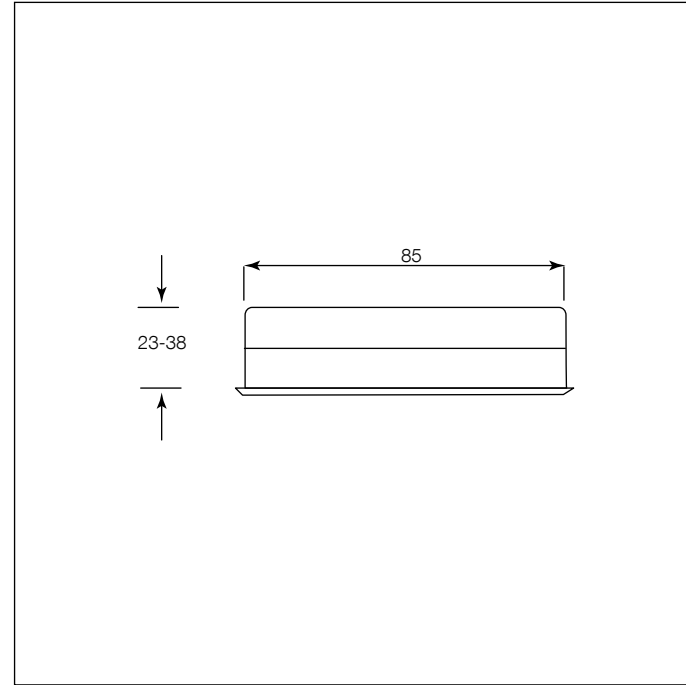
- **E 215** alluminio metallizzato opaco con fondo / **mat metallized aluminium with primer**
- **E 228** nero opaco con fondo / **mat black with primer**
- **E 229** bianco opaco con fondo / **mat white with primer**
- **G 104** cromato lucido / **bright chromium plated**  
altre finiture su richiesta / **other finishings on demand**



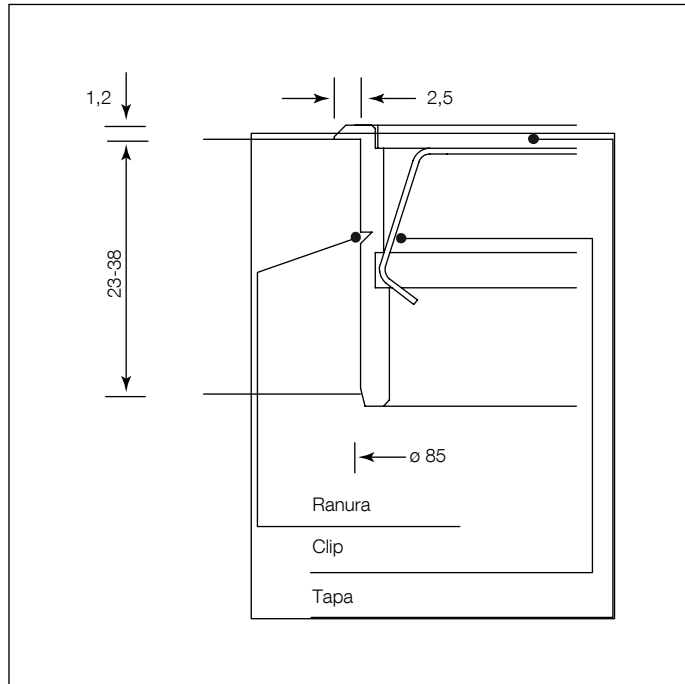
9865



vista frontale **frontal view**



dimma foro **hole template**



sezione **section**

**Finiture – Finishings**

- 9865 Inox mate y aluminio F1





Roselló Nº 21  
08029 - BCN  
936 002 002  
info@arcon.es  
www.arcon.es